

BEST OF 2020

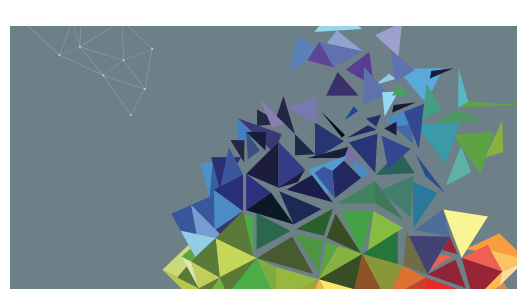
THE ONTIC YEAR IN REVIEW

2020 has been... a year, but we couldn't let it pass without sharing some highlights. Get comfortable and grab your beverage of choice to toast to some of our greatest content of the year.

BROUGHT TO YOU BY THE CENTER FOR PROTECTIVE INTELLIGENCE



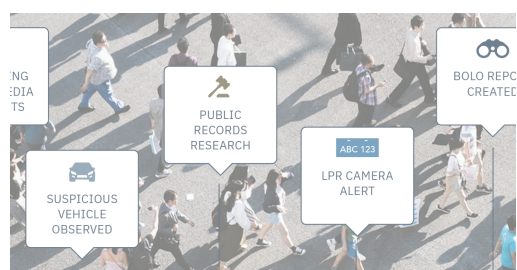
GSOC (GREAT SOURCES OF CONTENT)



REPORT

2021 STATE OF PROTECTIVE INTELLIGENCE REPORT

There's a lot that's changed in the physical security space in 2020, but do we know how this will impact 2021? Our report showcases the collective perspectives of security and compliance decision-makers at U.S. companies.



WHITEPAPER

THE PROTECTOR'S GUIDE TO ESTABLISHING AN INTELLIGENCE BASELINE

Working in the blind and feeling like you're the last one in a game of telephone isn't fun. This whitepaper shares a framework for protective intelligence teams to establish a professional baseline, or minimum standard, when gathering or sharing intelligence.



INFOGRAPHIC

STALKING IN THE WORKPLACE

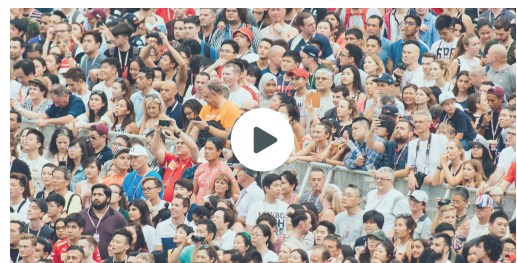
This infographic reveals eye opening statistics about stalking in the workplace, as well as research from the victim's perspective.



WHITEPAPER

DEFINING A PROACTIVE APPROACH TO SECURITY AND FIVE REASONS WHY IT CAN'T WAIT

A technology-supported approach to proactive security — also known as protective intelligence — helps teams cut through the noise to know what to act on and when. Here are five reasons why it can't wait until next year.



WEBINAR

HOW TO IDENTIFY THOSE WHO POSE A THREAT FROM THOSE WHO MAKE A THREAT

Threat assessors must balance the opposite errors of underestimating a potentially serious risk with overreacting to the many concerns brought forward that ultimately don't pose a risk. Dr. Stephen White, co-developer of the WAVR-21, discusses how this plays out and the risk factors behind it.

BOLO: BEST OF THE BLOG



BLOG POST

THE CASE FILES: GABRIELLE DEE GIFFORDS, FORMER U.S. REPRESENTATIVE

A first in a blog series exploring historical events, this article highlights the pre-incident indicators present before the mass shooting at Former Senator Giffords' 2011 event. Let's learn from the past and detect threats early.



BLOG POST

UNRAVELING THE MICHIGAN PLOT: A LESSON IN PROTECTIVE INTELLIGENCE

We're keenly aware of current events and trends, and help readers apply what is happening to their own worlds — oftentimes within corporate security. Fred Burton analyzes the Governor Whitmer kidnapping plot and provides key takeaways.



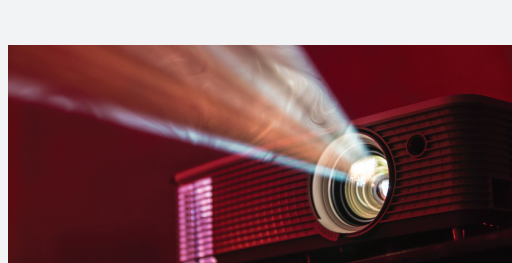
BLOG POST

THE DEFINITIVE PROTECTIVE INTELLIGENCE READING LIST

Maybe it's the extra time we had on our hands this year without traffic and social events, or perhaps we value Fred Burton's perspective, or something in between — whatever option you chose, this list was a fan favorite.

POI (PODCASTS OF INTEREST)

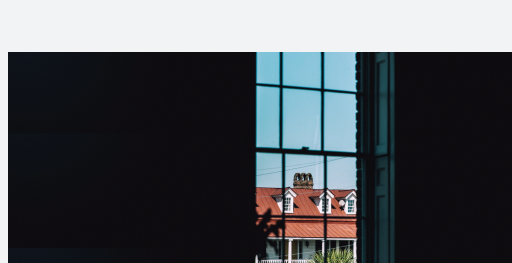
We launched the Ontic Protective Intelligence podcast in July 2020 and now have a library of 12 episodes (and counting!). Here are our most listened to episodes this year:



PODCAST

A DARK NIGHT IN AURORA: INSIDE JAMES HOLMES AND THE COLORADO MASS SHOOTINGS

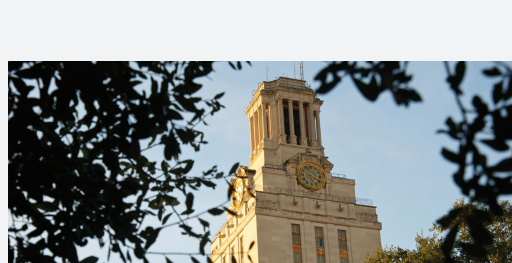
Featured Guest: Dr. William H. Reid



PODCAST

HOW THE KIDNAPPING OF EXXON'S PRESIDENT FOREVER CHANGED EXECUTIVE PROTECTION

Featured Guest: Phillip Jett



PODCAST

A SNIPER IN THE TOWER: HOW UNIVERSITY OF TEXAS SPEARHEADED A CHANGE IN CAMPUS SECURITY

Featured Guest: Gary M. Laverigne



Check out the [Ontic Center for Protective Intelligence](#) for more great content from our team of security experts

Explore Now